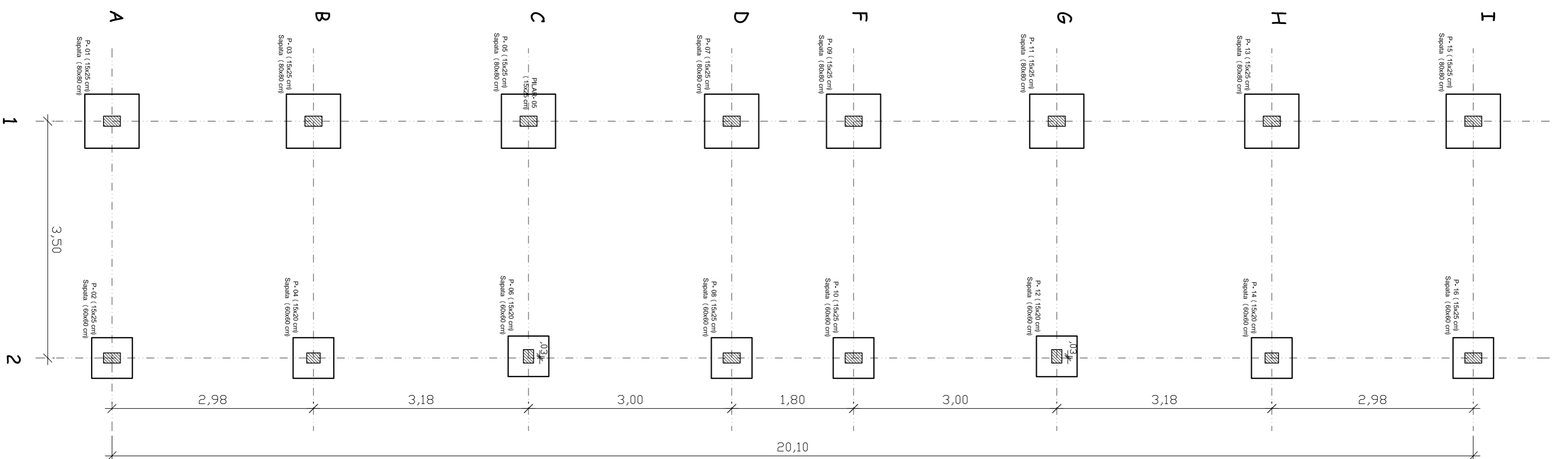


PLANTA DE LOCAÇÃO (Fundação)

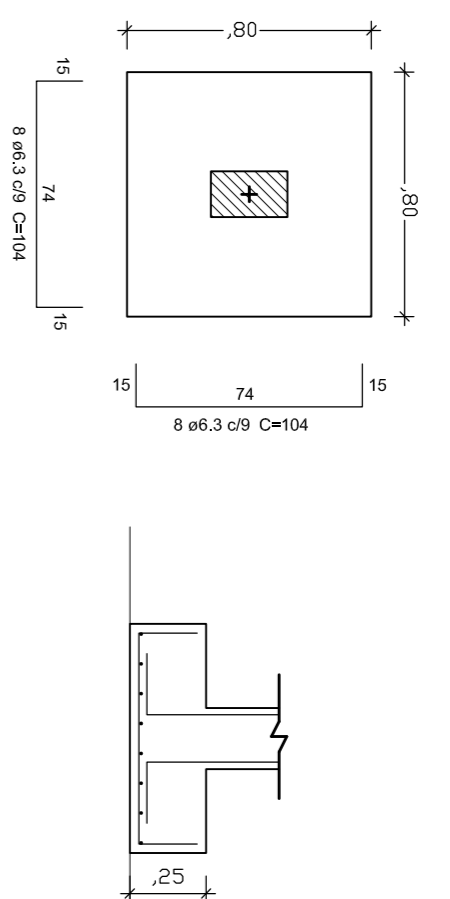
SAPATAS



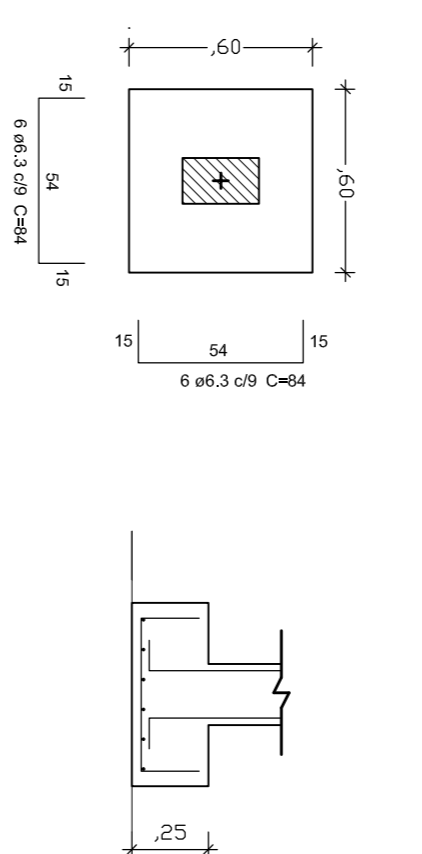
PLANTA DE FÔRMAS (Vigas Baldrame)

VIGAS BALDRAME: Detalhamento

1; 3; 5; 7; 9; 11; 13 e 15

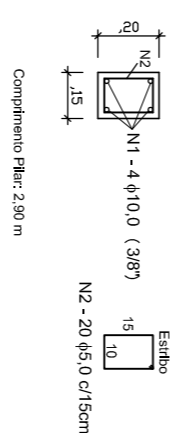


2; 4; 6; 8; 10; 12; 14 e 16

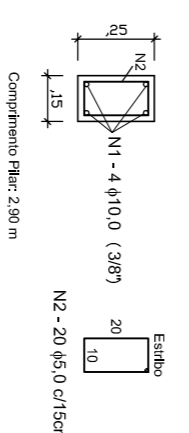


PILARES

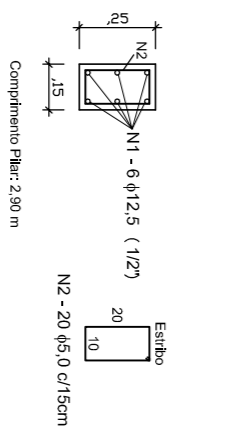
4; 6; 12 e 14



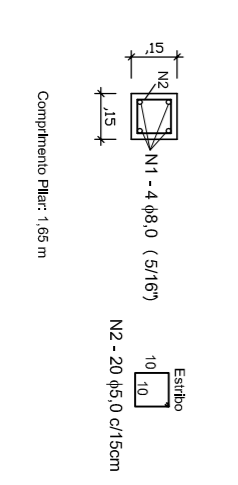
2; 3; 7; 8; 9; 10; 13 e 16



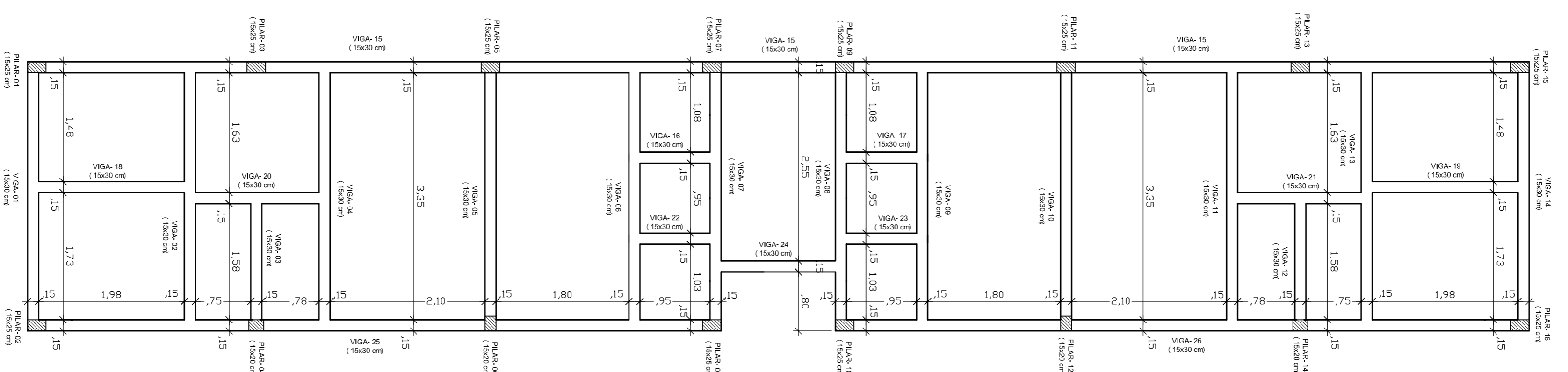
1; 5; 11 e 15



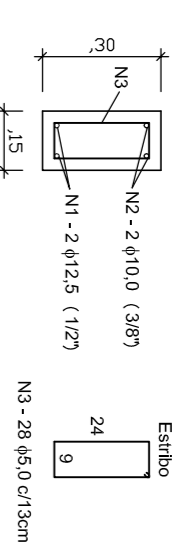
Pilares Abrigo Reservatório



ESCALA: 1:50



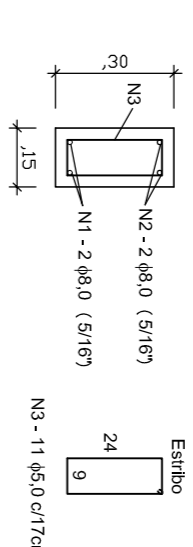
VIGA 1
Corte A



VIGA 3
Corte A



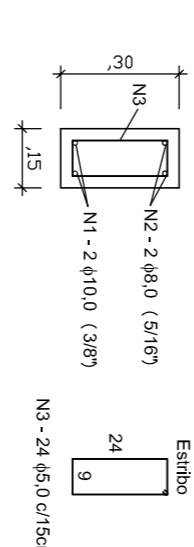
VIGA 5
Corte A



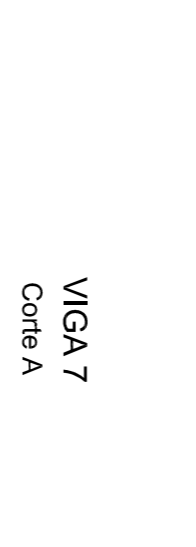
VIGA 7
Corte A



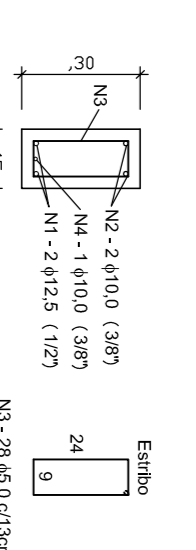
VIGA 9
Corte A



VIGA 11
Corte A



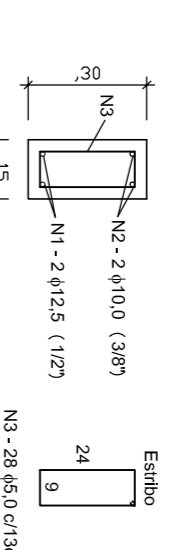
VIGA 2
Corte A



VIGA 4
Corte A



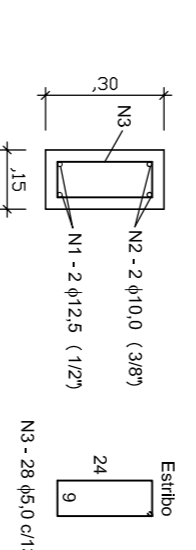
VIGA 6
Corte A



VIGA 8
Corte A



VIGA 10
Corte A



RODRIGO WITT
ENG. CIVIL - CREA RS 172076
SETOR DE ENGENHARIA

NAZÁRIO RUBI KUNTZER
PREFEITO MUNICIPAL

PREFEITURA MUNICIPAL DE HERVEIRAS

RUA GERMANO WINK, Nº 845
FONE: (51) 3616 2002



ENGENHARIA
PREFEITURA MUNICIPAL
HERVEIRAS

OBRA: QUADRA POLIESPORTIVA

ESCALA: INDICADA

ÁREA TERRENO: 49,045,74 M²

LOCAL: PARQUE DE EVENTOS OSMAR CLAES

DATA: 24/02/2016

ÁREA COBERTURA: 934,00 M²

PROJETO ESTRUTURAL
DETALHES: SAPATAS E VIGAS BALDRAME

7

ESCALA: 1:50